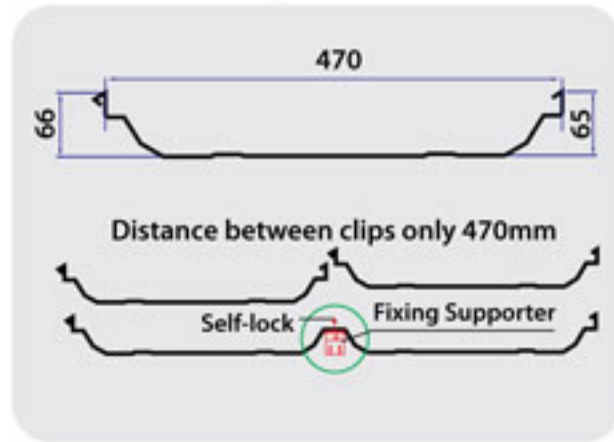


## PEB STEEL HAS THE BEST SOLUTIONS FOR YOUR BUILDING

### >> Water Leak Solution: LOK-SEAM® (Locks & Seams)

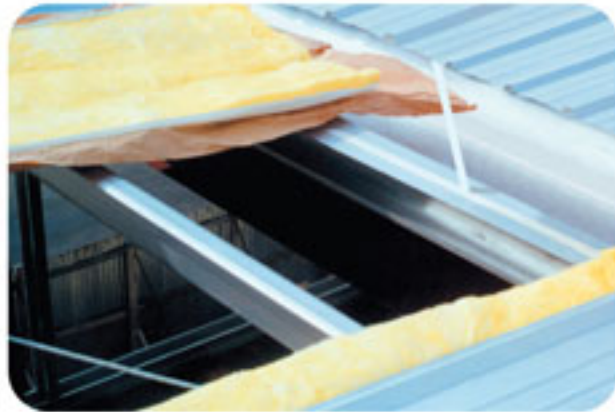
**LOK-SEAM®**  
Standing Seam Roof 360°  
The Only Roofing System That Locks & Seams

Resistance to strong winds due to

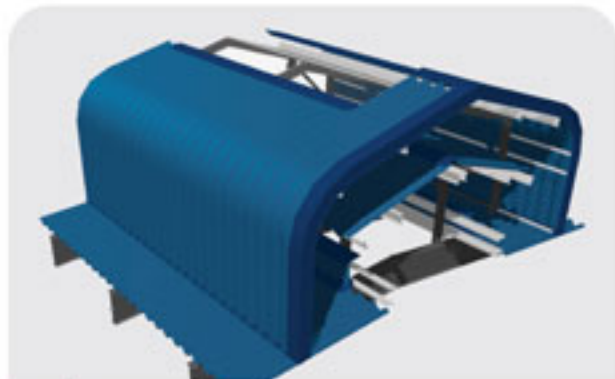


Fixing Supporter  
360°  
Self-lock  
Thicker and Wider

### >> Efficient Heat & Sound Reduction: PEB Insulation (PEBI)



### >> Efficient Ventilation: Ridge Ventilator (Energy savings, Comfortable and healthy indoor environment)



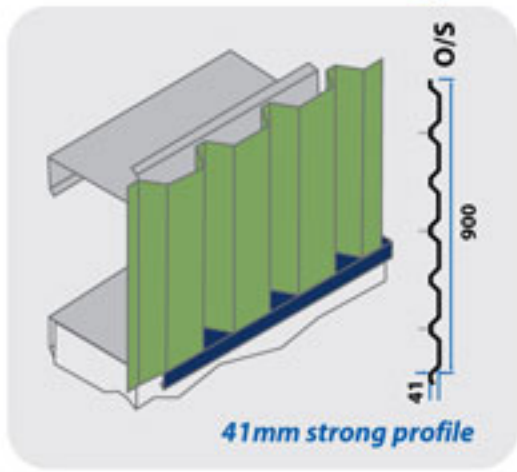
### >> We Do Shot Blasting for ALL Jobs (Shot blasting increases the life of protective coating & reduces maintenance cost)



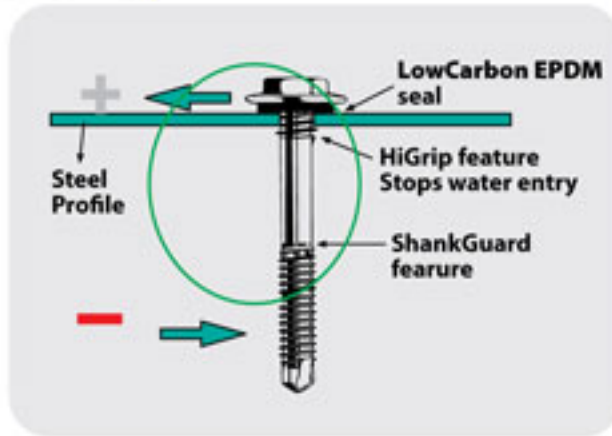
### >> Epoxy Paint for Steel Frame (Epoxy has excellent corrosion & chemical resistance)



**>> Our Wall is PEB Wall 41 mm rib. Cannot see screws  
Our Building - Most Beautiful in the PEB Industry**



**>> Bolted Roofs: 19 mm Wide, 3 mm Thick, T19 (EPDM) Washer  
(Prevents water leak for Bolted Roofs)**



**>> Galvanized Bracing  
(Anti-Rust & Beautiful)**



**>> PEB did Largest Job (11,300 MT), Widest Clear Span (90 m Clear)**



**>> 8m Long, 0.6mm thick Trims, Flashing  
(Strong, Durable & Beautiful)**



## >> 18 Years Experience in Steel Buildings in Vietnam



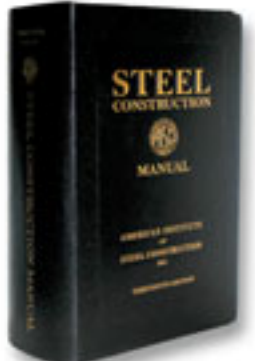
## >> Latest International Codes



IBC 2009



AWS 2008



AISC 2005

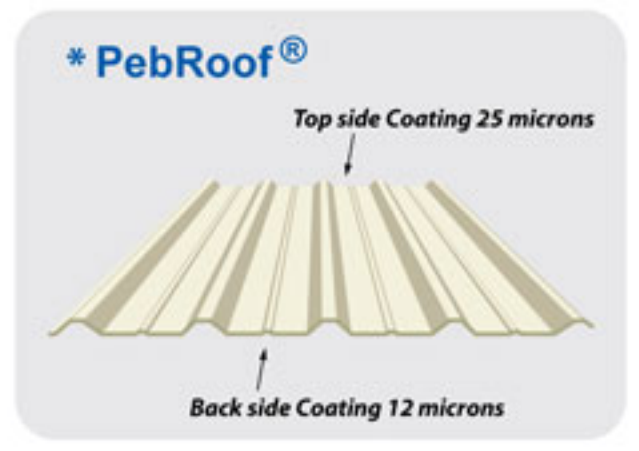
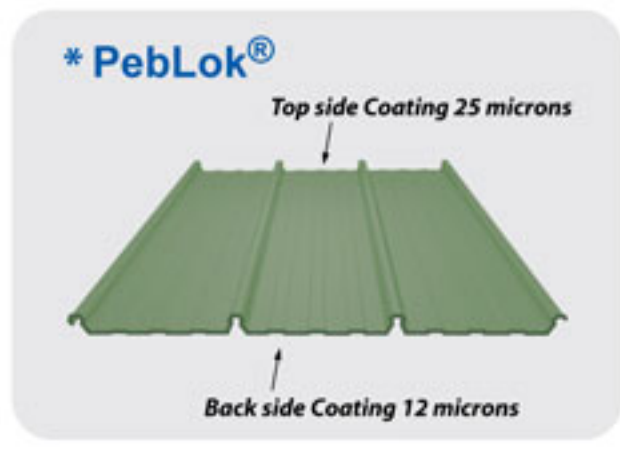
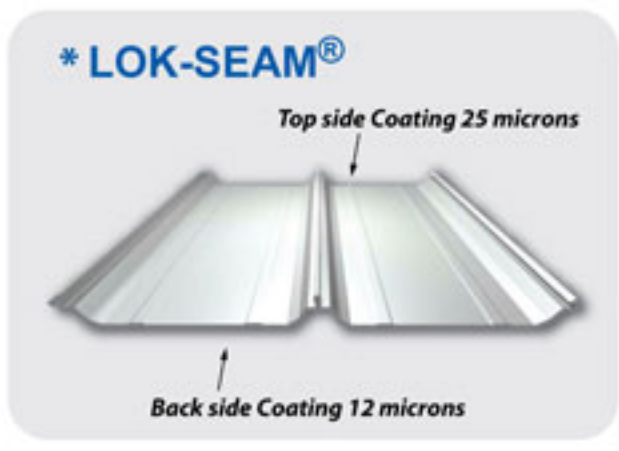


MBMA 2010

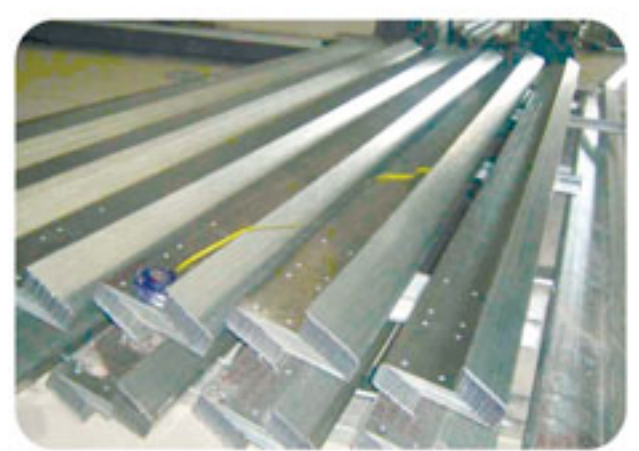
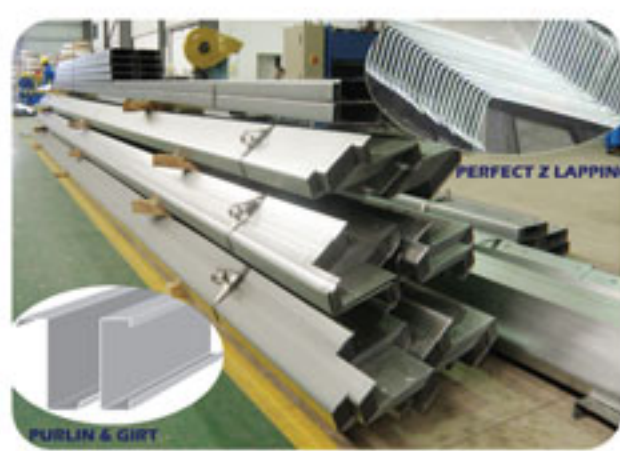
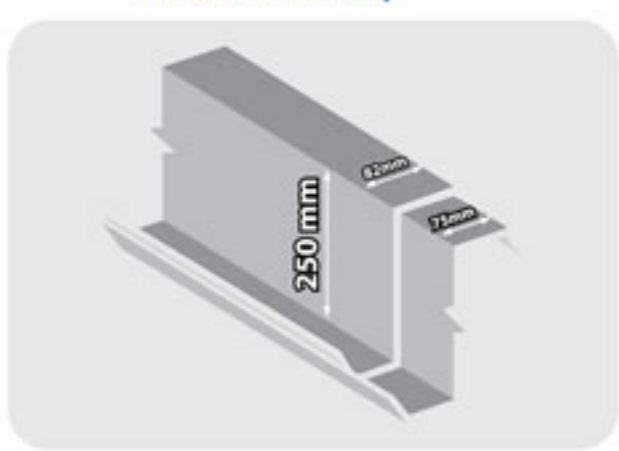


AISI 2007

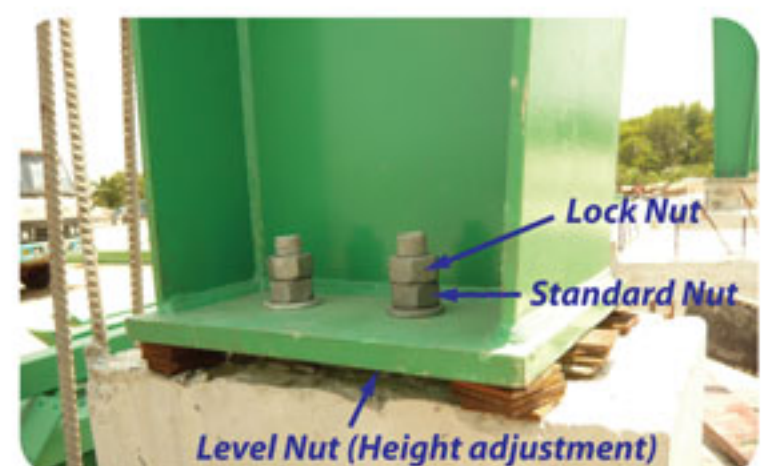
## >> Alupeb (Painted Zinc Alum Panel) (AZ150, Top side Coating 25 microns and Back side coating 12 microns) last 3 years longer than other Products in the market.



## >> 350 gr/m<sup>2</sup> Zinc Coating for Purlins (Corrosion resistance performance of Z350 is SIX years longer life than other Zinc Coated Purlins in the market)



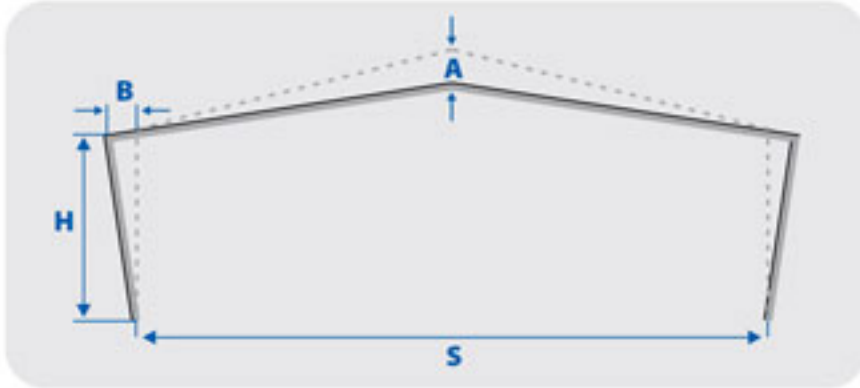
## >> We use 3 Nuts for Anchor Bolts



**>> Use Plastic Caps to Cover Anchor Bolts**  
(Beautiful, prevents dirt, safety feature)



**>> Strict Deflection Criteria**



**\* Vertical Deflection**

- Main frame rafters :  $A = \text{Span } (S) / 180$

**\* Lateral Deflection**

- Main frame columns with eave height (EH) up to 9.0m:

$B = \text{Eave height } (H) / 60$

- Main frame columns with eave height (EH) greater than 9.0m:

$B = \text{Eave height } (H) / 100$

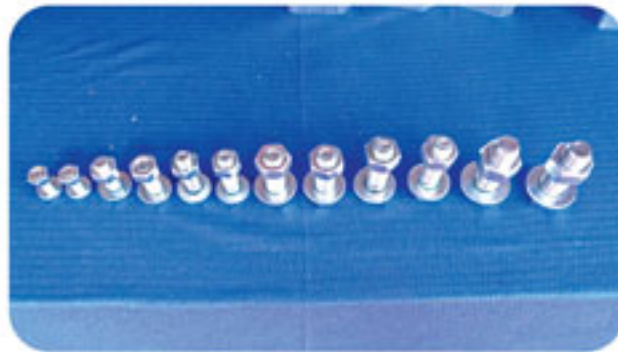
**>> After Sales Service: 10 Years Structural Design Warranty**



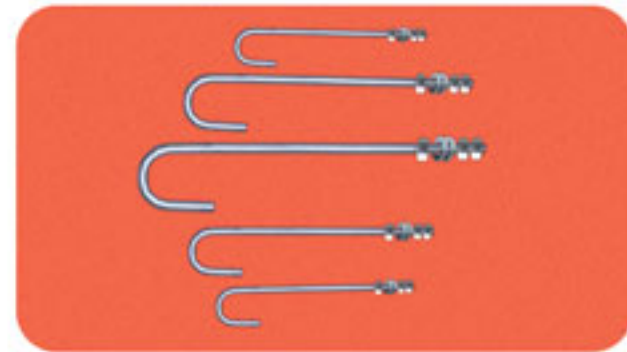
**>> Galvanized Anchor Bolts, Galvanized connection Bolts**



Galvanized Fasteners with 19mm EPDM Washer



Bolts & Nuts (Galvanized)



Anchor Bolts (Galvanized) - 3 Nuts, 2 washers

**>> Most Innovative Pre-engineered Factories in Vietnam**



**>> Full Automatic Production**

